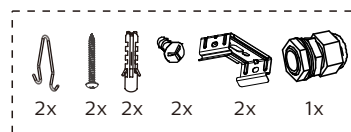
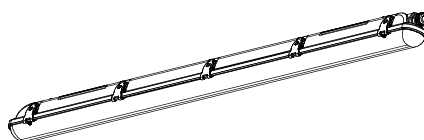


PHILIPS

Ledinaire Waterproof

WT065C G2



220V
240V

50Hz
60Hz

IP65

IK08

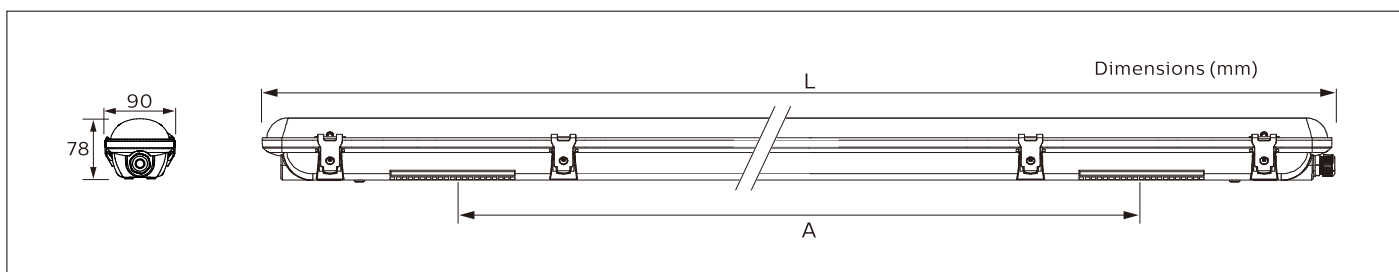
Max.
40°C
Min.
-20°C



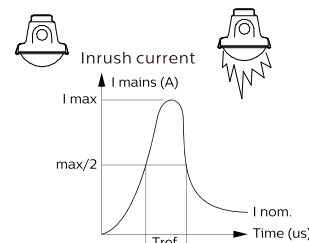
LIFE
75K hrs
@L70

GLOW
WIRE
850 °C

Product Description	CCT(K)	P(W)	Energy Efficiency Class of Light source	Dimensions (mm) L A	kg
WT065C G2 LED88S/840 PSU L1500 PCO	4000K	60	C	1507 960-1160	1.60
WT065C G2 LED98S/840 PSU L1500		60	C	1507 960-1160	1.60



	LED88S	LED98S
I _{max}	6.9	6.9
T _{ref} [μs]	58	58
Max. Nr of products		
Drivers/ MCB16A type B [max.]	30	30
Drivers/ MCB10A type B [max.]	18	18
Drivers/ MCB16A type C [max.]	51	51
Drivers/ MCB10A type C [max.]	31	31



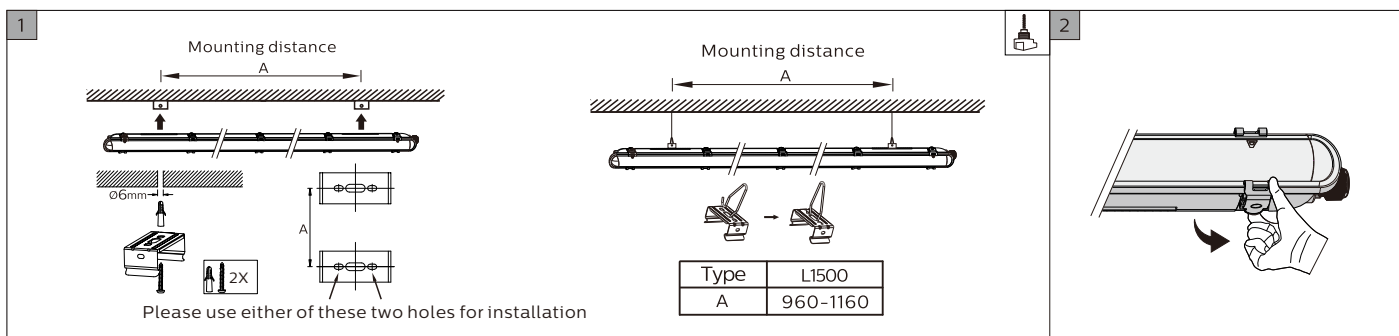
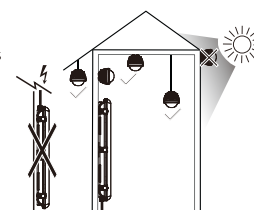
-The luminaire shall be installed by a qualified electrician and wired in accordance with the latest IEE electrical regulations or the national requirements. The light source contained in this luminaire shall only be replaced by the manufacturer or his service agent or a similar qualified person.

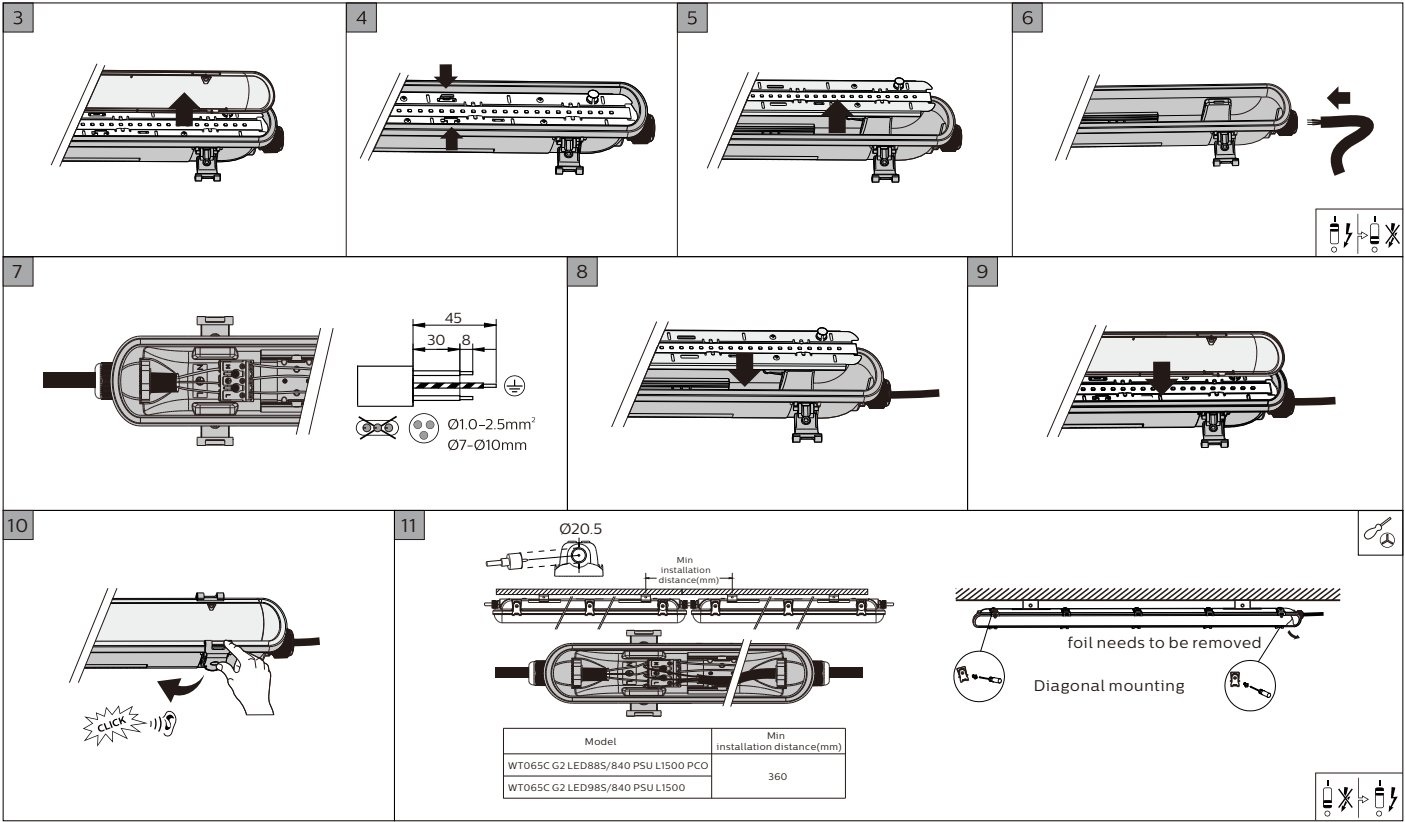
-Do not store/install/use the luminaire in corrosive environment with hazardous substances, e.g., sulphur, chlorine, phthalates etc., or on the location where it is exposed to conductive dust, heavily grease (esp. mineral oil or distillates, e.g., petroleum), heavily naphthenic treated with hydrogen.

-This product is not suitable for cold & humid storage areas, especially where obvious temperature gradients are present, such as ventilation opening, door, etc.

-Do not install the luminaire on the location where it is exposed to direct sunlight. UV radiation will damage the material over time, resulting in loss of waterproof sealing and IP65 rating.

-Do not stare into LED light beam.





10



CLICK



11

Ø20.5



Min installation distance(mm)



Model	Min installation distance(mm)
WT065C G2 LED885/840 PSU L1500 PCO	360
WT065C G2 LED985/840 PSU L1500	



foil needs to be removed

Diagonal mounting



